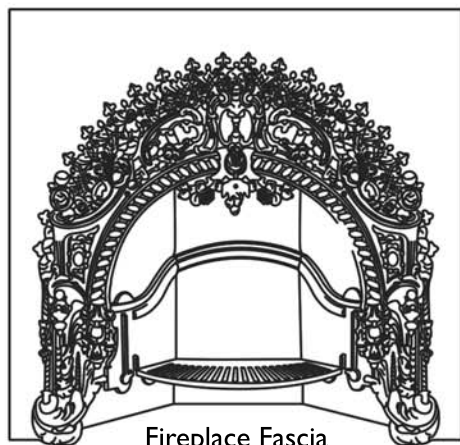


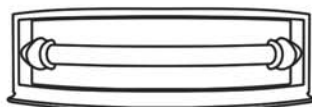


The Rococo Insert

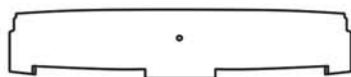
Contents



Firebrace Fascia



Bars



Ashpan Cover



1x M6 Bolt



Ashpan Handle



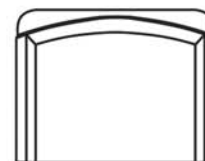
1x M6 Washer



1x M6 Nut

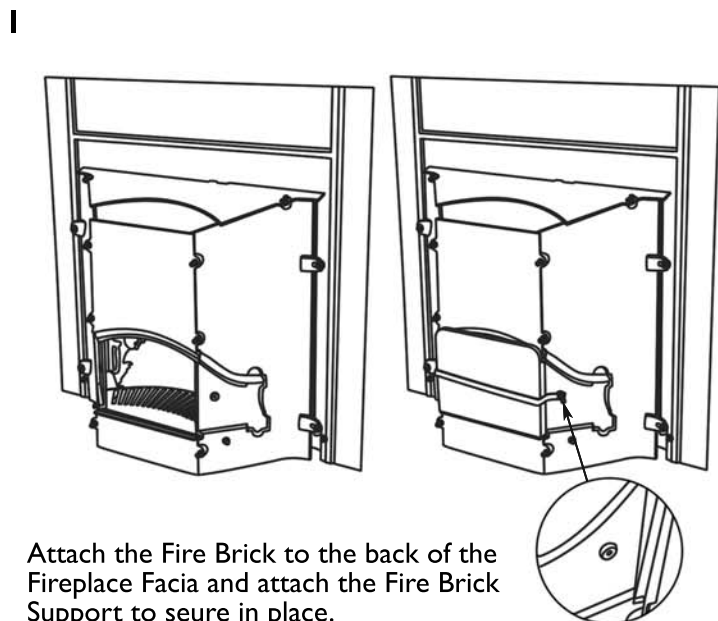


Fire Brick Support

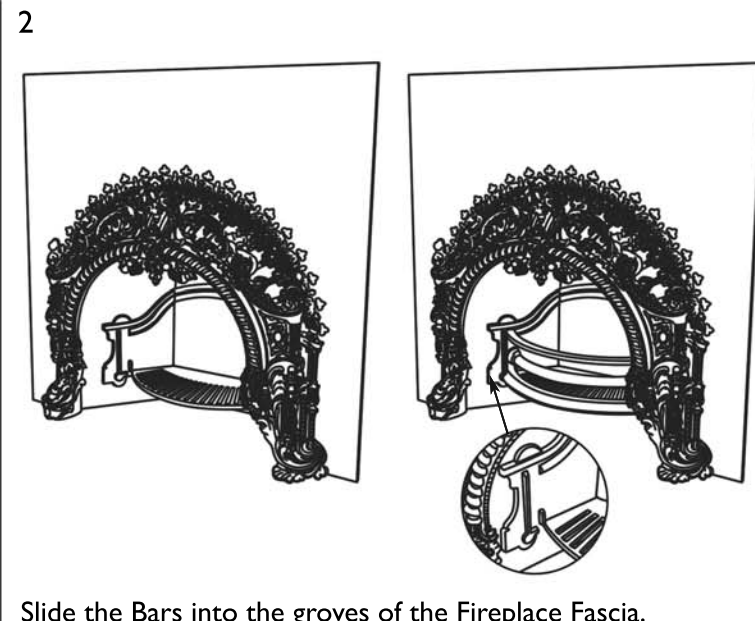


Fire Brick

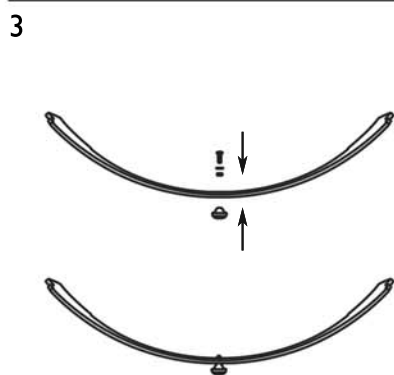
Please note, a 10mm spanner is required to assemble this fireplace.



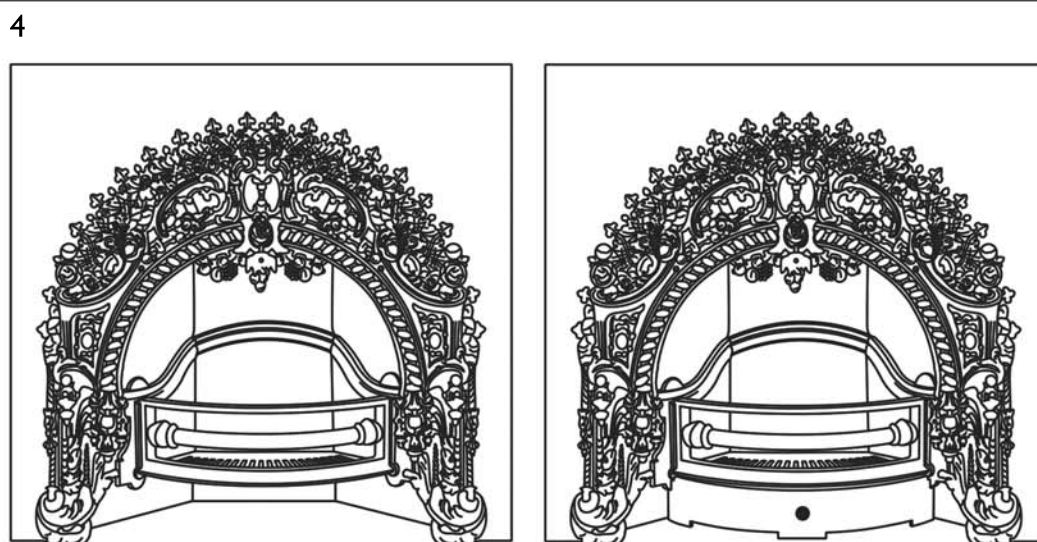
Attach the Fire Brick to the back of the Firebrace Fascia and attach the Fire Brick Support to secure in place.



Slide the Bars into the grooves of the Firebrace Fascia.



Attach the Ashpan Handle to the Ashpan Cover using an M6 Washer, M6 Nut and M6 Bolt.



To complete, place Ashpan Cover below Grate and Bars on the front of the Fireplace.